



\* All images in this datasheet are for illustrative purposes only.

## Outdoor Touch Open-frame Display 22XF1TJ

# Versatile Touch Display Fit for Your Business



1,300 nits  
High Brightness



Polarized  
Sunglasses



Versatile  
Display Size (21.5")



IP66 Rated Dust  
& Waterproof



Built-in Touch Display



webOS  
Smart Platform

22XF1TJ

Screen Size, Panel	21.5" IPS
Native Resolution	1,920 × 1,080 (FHD)
Brightness	1,300 nits (Typ. w/Glass)
Portrait / Landscape	Yes / Yes
Dimensions / Weight	21.3 x 12.7 x 2.4 in. / 17.9 lbs. 541.7 × 322.8 × 60 mm / 8.1 kg
Feature	IP66 Rated Dust & Waterproof, Auto Brightness Sensor, Temperature Sensor, P-cap Touch, Built-in Wi-Fi Module, Control Manager





## High Visibility Under Bright Environments

With a brightness of 1,300 nits, 22XF1TJ boasts high visibility in bright environments. In addition, its clear visibility can deliver a variety of information even to those wearing polarized sunglasses.



## Built-in Touch Display

The 22XF1TJ has a capacitive touch, detecting touch points even on the corners or edges of the display. Simply obtain the information you need by simply touching the screen.



## Secured Protection with IP66 Design

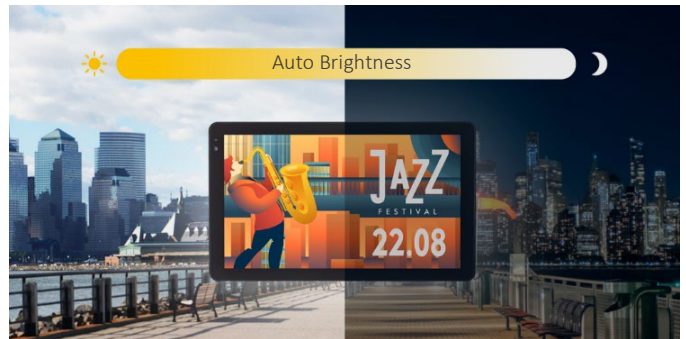
The front part of the display is sealed with IP66 design\* for reliable operation. It's designed to be not only water resistant but also resistant against the damaging effects of the rain, snow, and dust, which is an essential feature for outdoor application.

\* IP Code or Ingress Protection Code classifies the degree of protection provided by mechanical casings and electrical enclosures against intrusion, dust, accidental contact, and water. IP66 means the product is protected from total dust ingress and resists high-pressure, heavy sprays of water. 22XF1TJ is certified as IP66 by CTK in November 2021.



## 21.5 inches of Versatile Screen Size

The small and light size of the 21.5-inch display allows for flexible use in various spaces for small, medium and large businesses.



## Smart Brightness Control

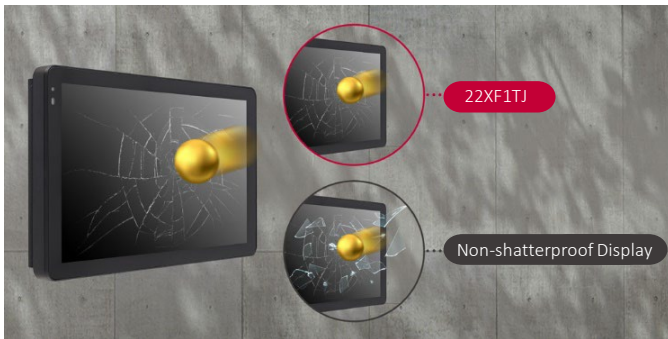
The screen brightness is automatically adjusted depending on the ambient light. In bright light, the brightness is increased for better visibility, while in the dark it is decreased for efficient power management.



## Wide Operating Temperature Range

22XF1TJ can be used under a wide range of operating temperatures from 32°F to 122°F which results in fewer constraints for outdoor installation.\*\*

\*\* 22XF1TJ is LG-internally tested under humidity of 30% (131°F) and 99% (104°F).



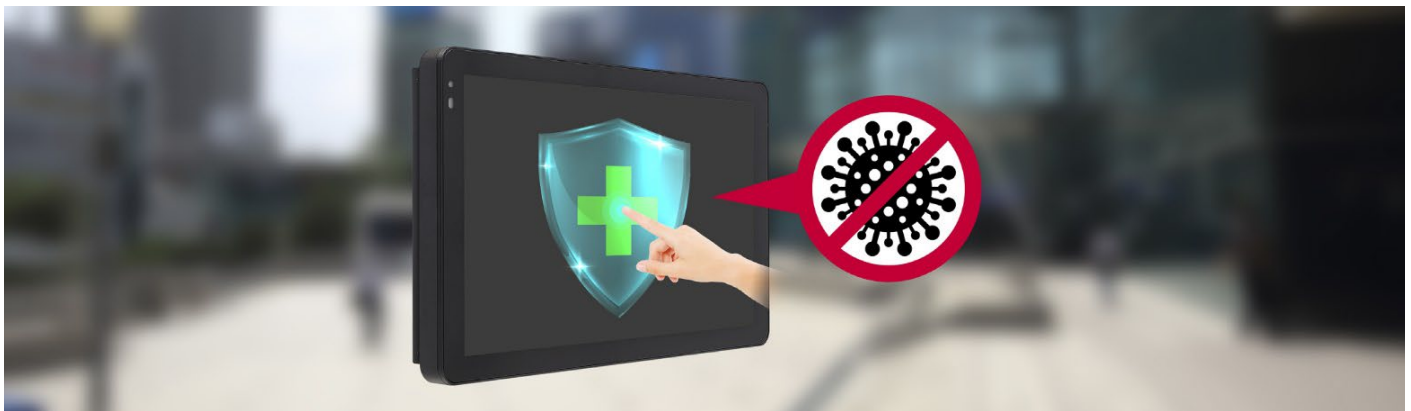
## Shatterproof Design with Boosted Safety

The 22XF1TJ applies a shatter-resistant film to the back of the front glass, preventing the risk of scattering debris even if the glass is damaged by a forceful impact.



## Conformal Coating

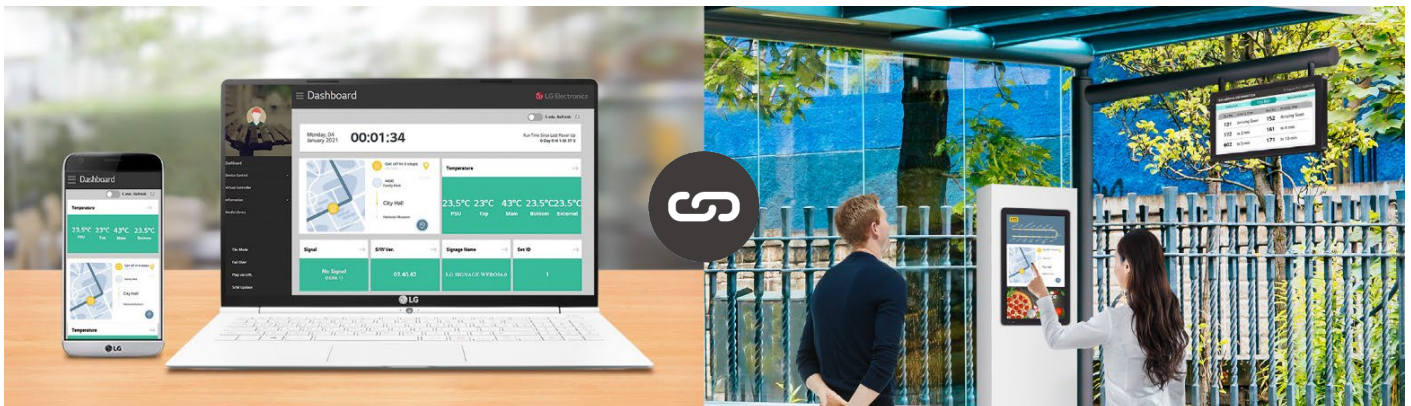
LG's Conformal Coating, a thin protective films/breathing membranes that filter water vapor and solid debris, helps protect the circuit board and power board.



## Maintaining an Unsoiled Screen with Antibacterial Coating

The 22XF1TJ applies an Antibacterial Coating to the touch screen, effective in preventing contamination by bacteria transmitted by touch and reducing stains and discoloration of the screen.

\* Antimicrobial coating glass is on surface of screen only and the effect may vary depending on kind of bacteria or conditions of use. The antimicrobial coating glass is treated with the antibiotic substance AEM 5700. AEM 5700 has the antibacterial effectiveness of more than 99% against Escherichia coli and Staphylococcus aureus. Testing for this (ISO 22196:2011) was conducted on a glass surface covered with AEM 5700. AEM 5700 also has the antibacterial effectiveness of more than 99% against SARS-CoV-2. Testing for this (ISO 18184:2019) was conducted on fabric covered with AEM 5700. In addition, AEM 5700 is certified by U.S. Environment Protection Agency (EPA) and the Biocidal Products Regulation (BPR, Regulation (EU)).



## Web Monitoring (Control Manager)

This is a web-based monitoring solution that enables users to have access and control anywhere, anytime from a mobile phone or PC as long as they're connected to a network. This allows users to monitor the unit, make any adjustments, control it remotely in real-time and have access to both current and past data.



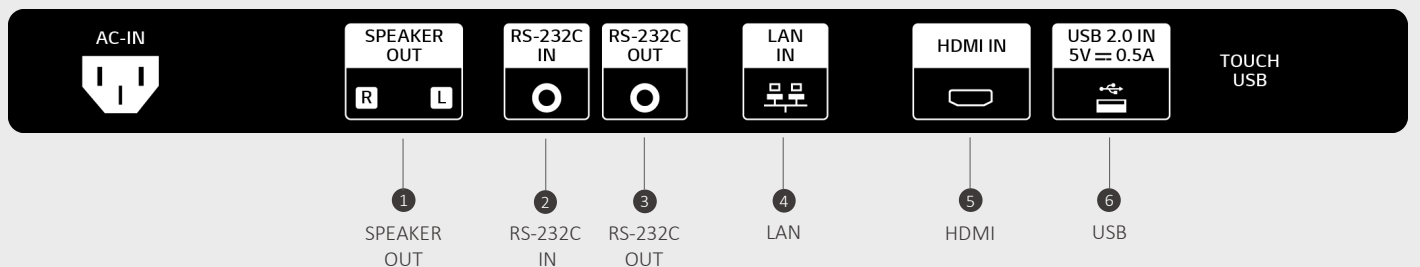


## Real-time LG ConnectedCare Service

Maintenance is easy and fast with the optional LG ConnectedCare\* service, a cloud service solution provided by LG. It remotely manages the status of displays in client workplaces for fault diagnosis and remote-control services.

\* The availability of the LG ConnectedCare service differs by region, and it needs to be purchased separately. So please contact the LG sales representative in your region for more details.

## CONNECTIVITY



\* Jack Panels may differ from the above image, so please contact LG sales team to verify before ordering.

## SPECIFICATIONS

## 22XF1TJ

Panel	Screen Size	21.5"
	Panel Technology	IPS
	Native Resolution	1,920 × 1,080 (FHD)
	Brightness	1,300 nits (Typ., w/Glass)
	Contrast Ratio	1,000:1 (Typ.)
	Dynamic CR	800,000:1
	Color Gamut	NTSC 72%
	Viewing Angle (H × V)	178° × 178°
	Color Depth	8 bit, 16.7 Million Colors
	Response Time (G to G)	25 ms
	Surface Treatment (Haze)	Anti Glare, 3 H (Haze 25%)
	Operation Hours (Hours / Day)	24 / 7
	Portrait / Landscape	Yes / Yes
	QWP (Quarter Wave Plate)	Yes (Apply On Glass)
Connectivity	Input	HDMI (HDCP 1.4), RS-232C, RJ45 (LAN), USB 2.0 (Type A)
	Output	External Speaker Out (1, L/R, 10 W +10 W), RS-232C Out
Mechanical Specification	Bezel Width	32.0 mm (R/L), 27.0 mm (T/B)
	Weight	17.9 lbs. / 8.1 kg
	Shipping Weight	21.4 lbs. / 9.7 kg
	Dimensions (W × H × D)	21.3 × 12.7 × 2.4 in. 541.7 × 322.8 × 60 mm
	VESA™ Standard Mount Interface	100 × 100
	Protection Glass	Depth (3 mm)
Key Feature	Internal Memory (16 GB), Sensor (Temperature Sensor, Auto Brightness Sensor, Humidity Sensor, Acceleration (Gyro) Sensor), Power Indicator, FAN, webOS 4.1, Embedded CMS (Local Contents Scheduling, Group Manager), USB Plug & Play, Fail Over, Background Image (Booting Logo Image, No Signal Image), Sync Mode (Local Network Sync), Video Tag (4, Max One HDMI Input), Play Via URL, Rotation (Screen Rotation, External Input Rotation), Gapless Playback, Setting Data Cloning, SNMP, ISM Method, Status Mailing, Control Manager, Power (Smart Energy Saving, PM Mode, Wake On LAN, Network Ready), HDMI-CEC <sup>1</sup> , SI Server Setting, webRTC, Pro:Idiom	
Environment Conditions	Operation Temperature (°C)	32°F to 122°F / 0°C to 50°C
	Operation Humidity	10 % to 80 %
Power	Power Supply	100-240 Vac, 50/60 Hz
	Power Type	Built-in Power
Power Consumption	Typ. / Max.	85 W / 115 W
	BTU (British Thermal Unit)	290 (Typ.) / 393 (Max.)
Sound	Speakers	No
Certification	Safety	CB / NRTL
	EMC	FCC Class "A" / CE / KC / VCCI
	ErP / Energy Star	Yes / No
	ePEAT (US Only)	No
Software Compatibility	SuperSign CMS, SuperSign Control / Control+, LG ConnectedCare <sup>2</sup>	
Accessories	Basic	Remote Control, Power Cord, Manual (EIG, IG), RS-232C Adapter
Special Features	IP Rating (IP66 (Front Only)), Direct Sunlight	

<sup>1)</sup> Compatibility may differ by equipment.

<sup>2)</sup> The availability can differ by region.

\* Specifications are subject to change without notice. Please make sure to check the product manual for details about product usage.